

Laboratory animal's ID marker

Oppen

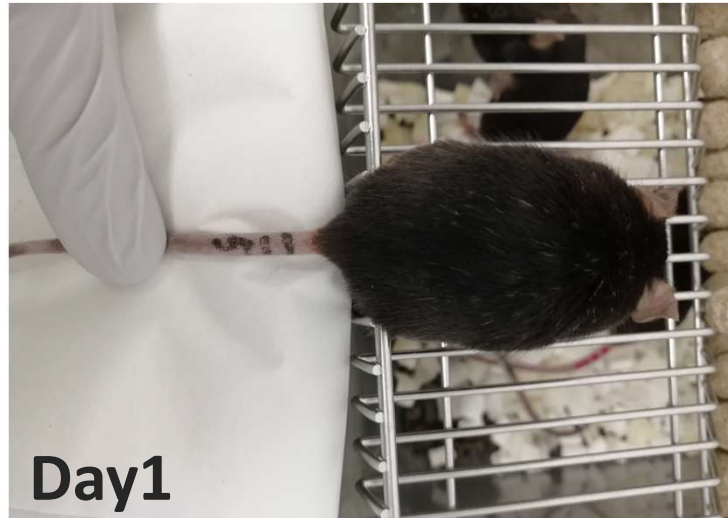
User's Voice
Case Study 5



Black Mouse(B6,Group Housing)
「Black」 on 6 months old



B6
After marking



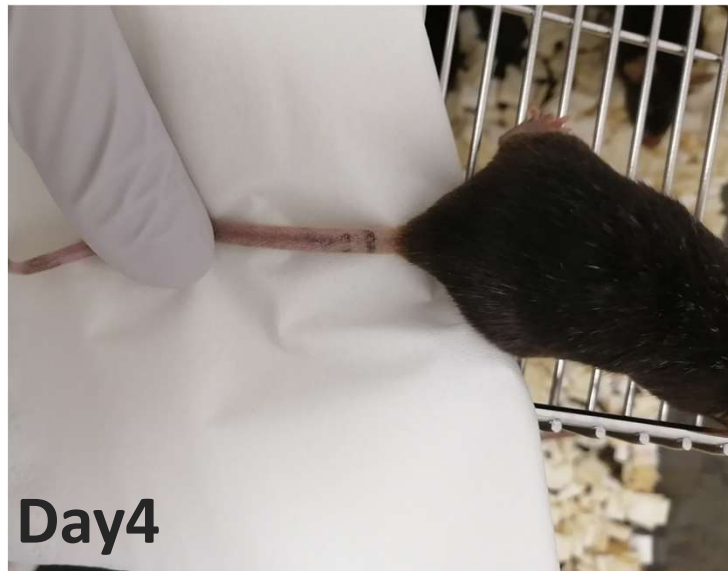
Day1



Day2



Day3



Day4



Day7

Laboratory animal's ID marker

Oppen

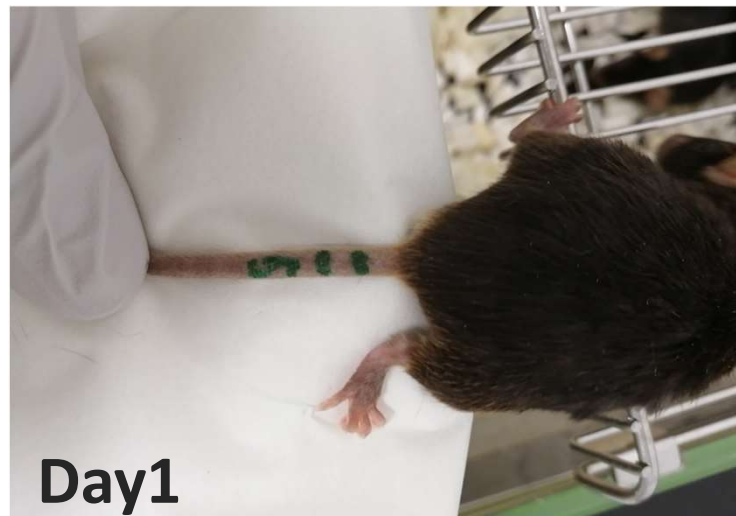
User's Voice
Case Study 5



Black Mouse(B6,Group Housing)
「Green」 on 6 months old



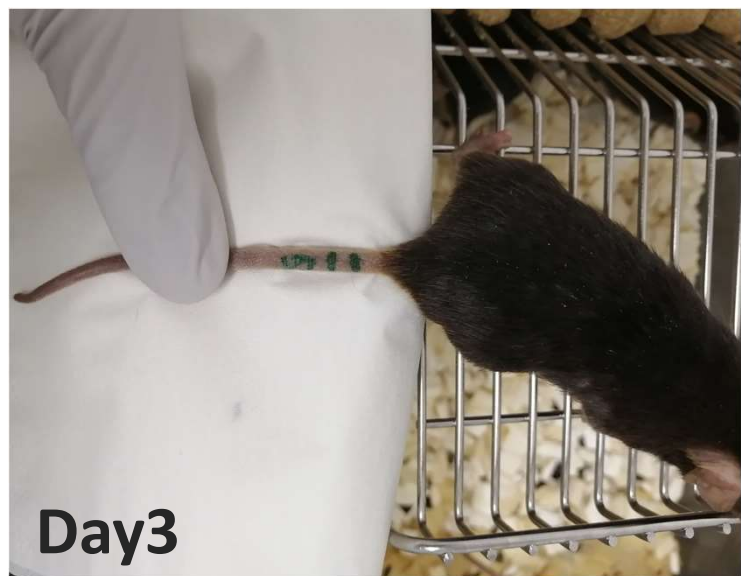
B6
After marking



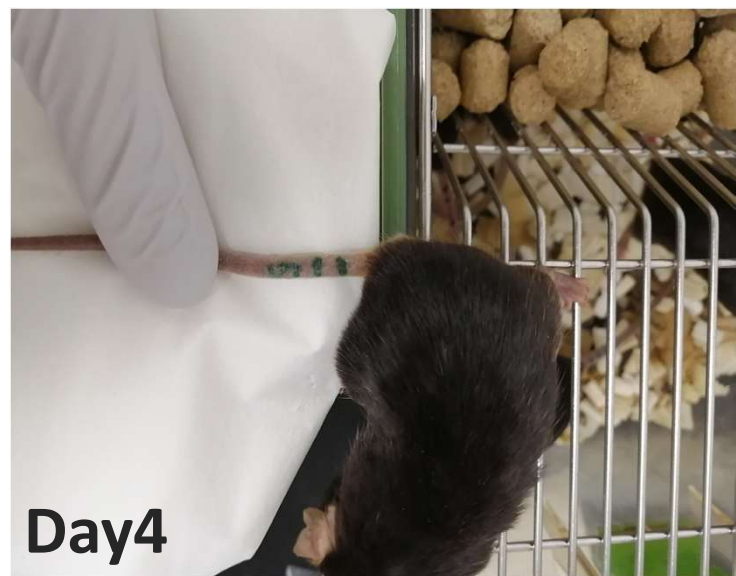
Day1



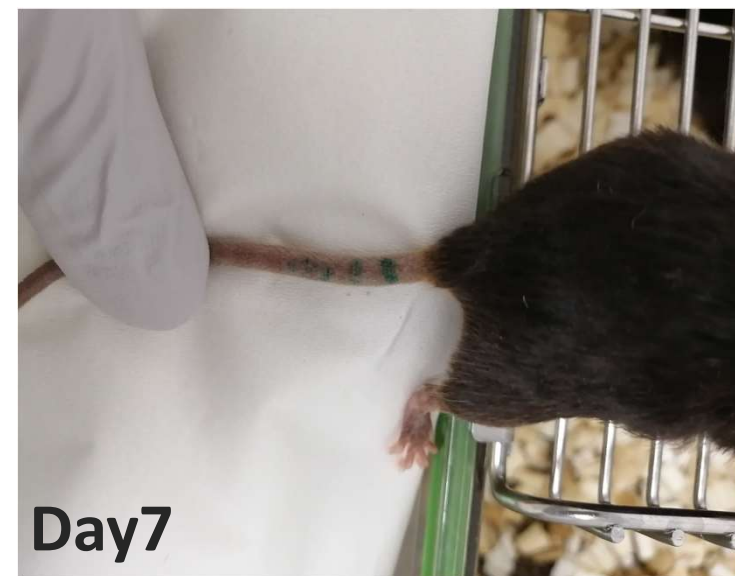
Day2



Day3



Day4



Day7

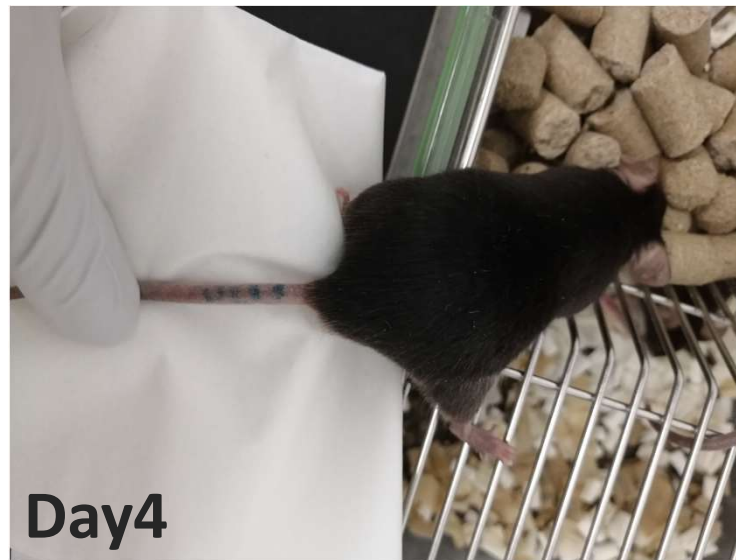
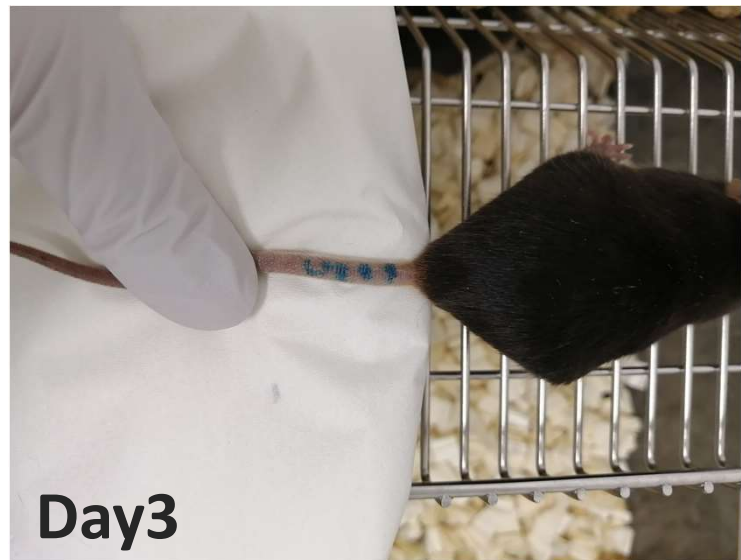
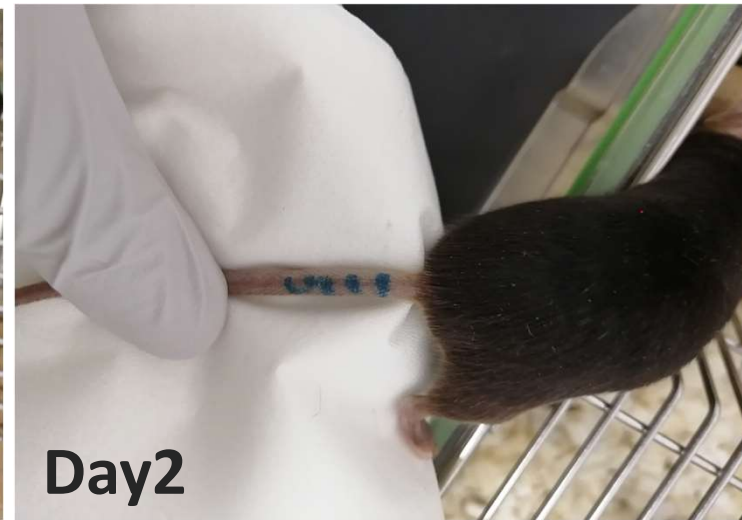
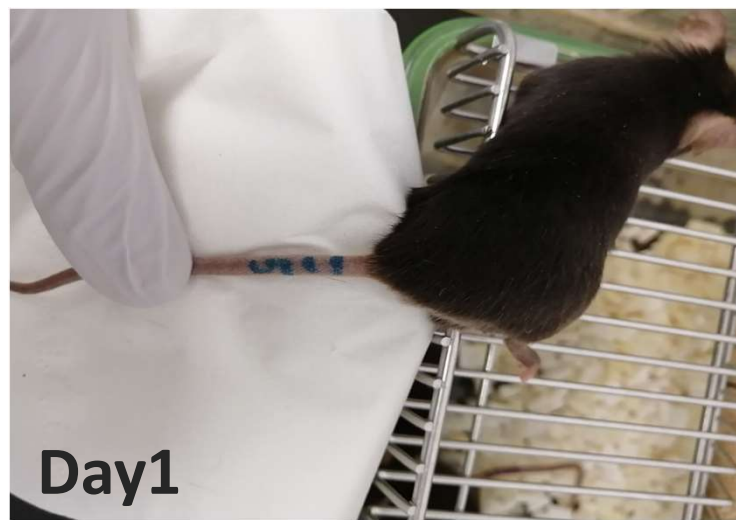
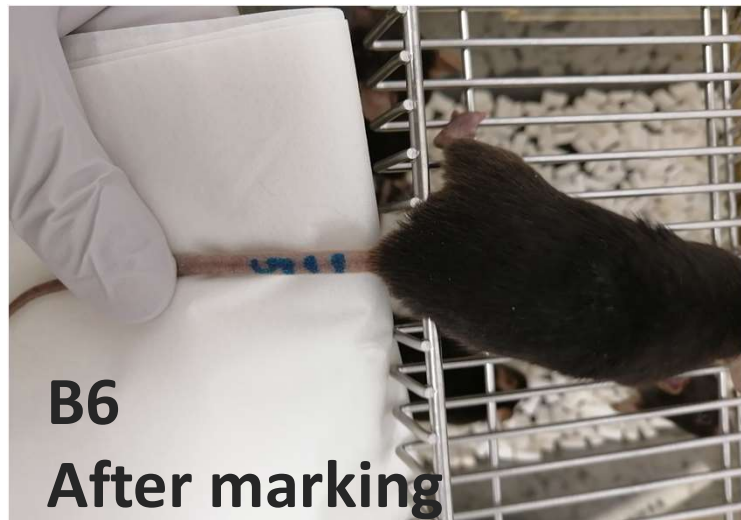
Laboratory animal's ID marker

Oppen

User's Voice
Case Study 5



Black Mouse(B6,Group Housing)
「Light Blue」 on 6 months old



Laboratory animal's ID marker

Oppen

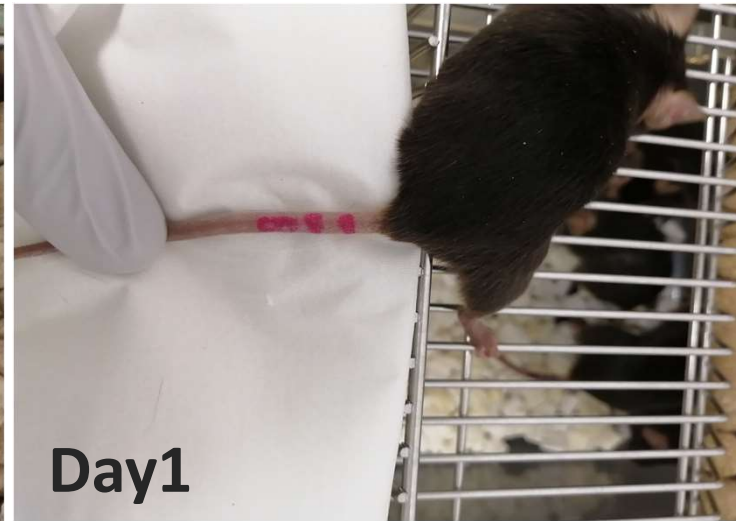
User's Voice
Case Study 5



Black Mouse(B6,Group Housing)
「Pink」 on 6 months old



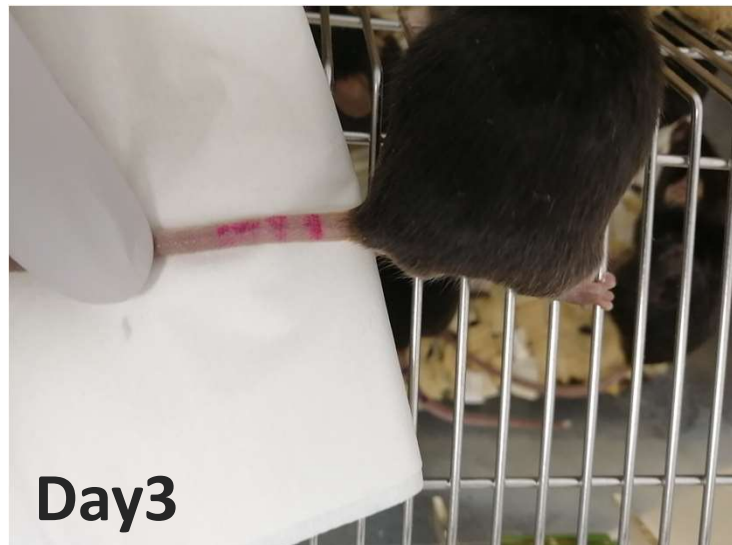
B6
After marking



Day1



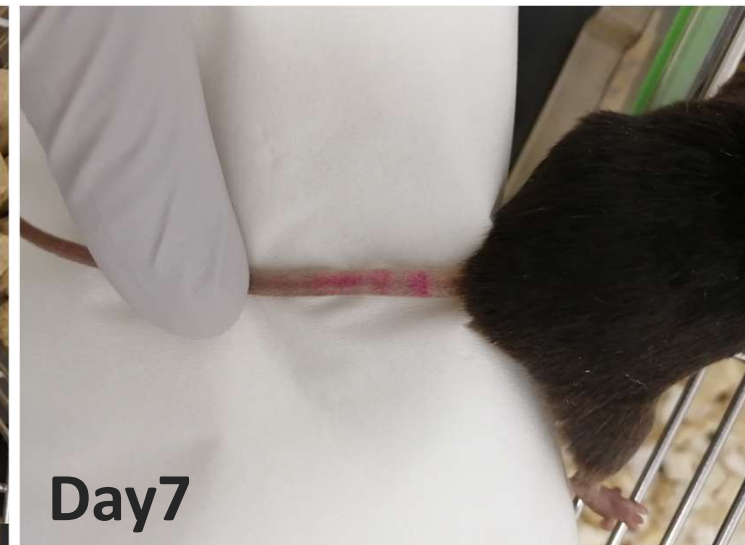
Day2



Day3



Day4



Day7

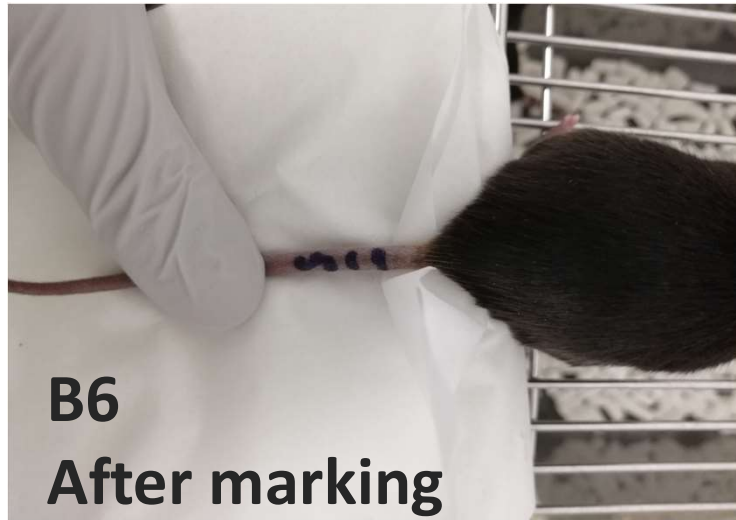
Laboratory animal's ID marker

Oppen

User's Voice
Case Study 5



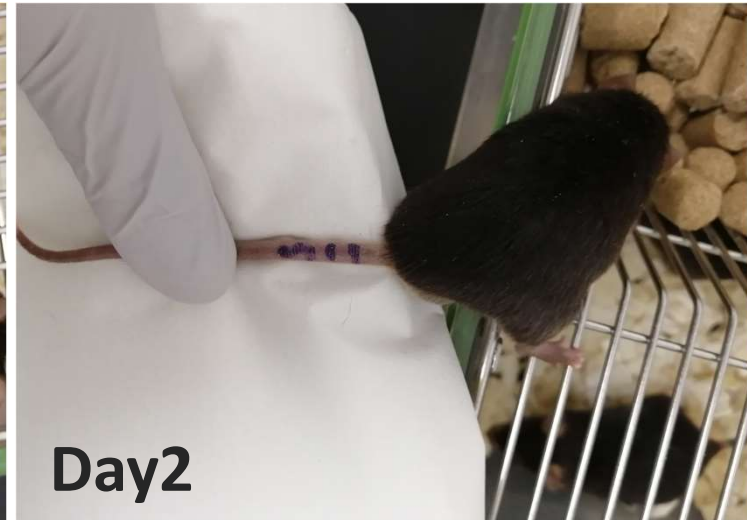
Black Mouse(B6,Group Housing)
「 Violet 」 on 6 months old



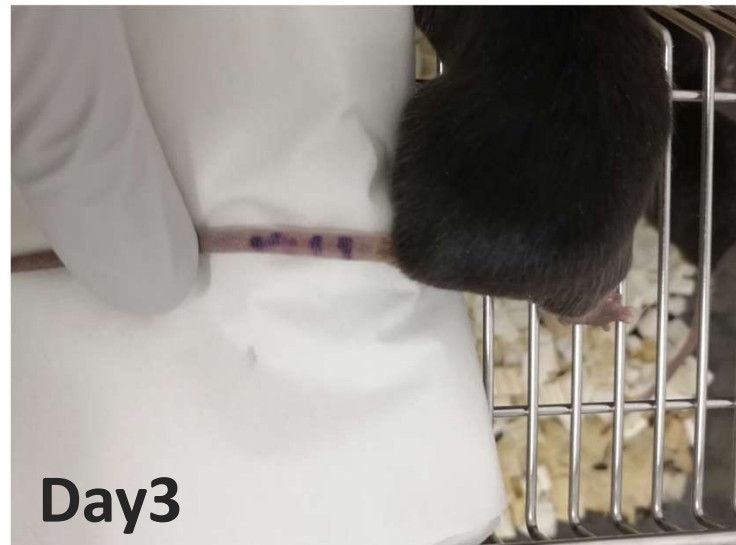
B6
After marking



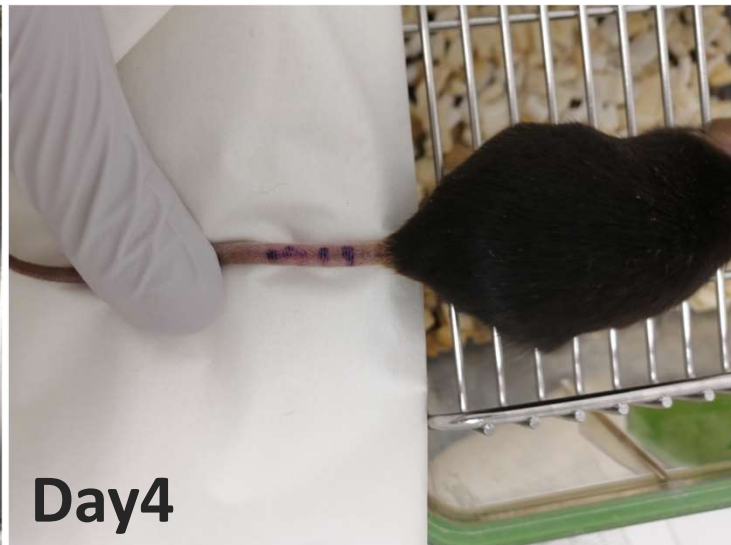
Day1



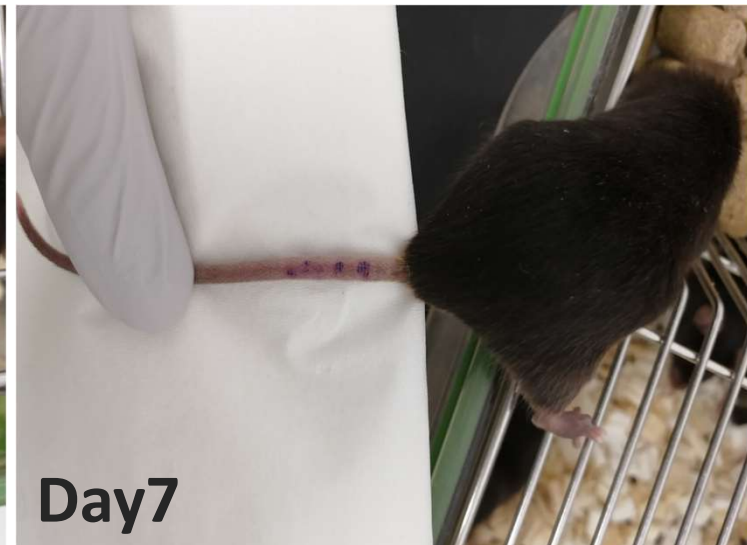
Day2



Day3



Day4



Day7