

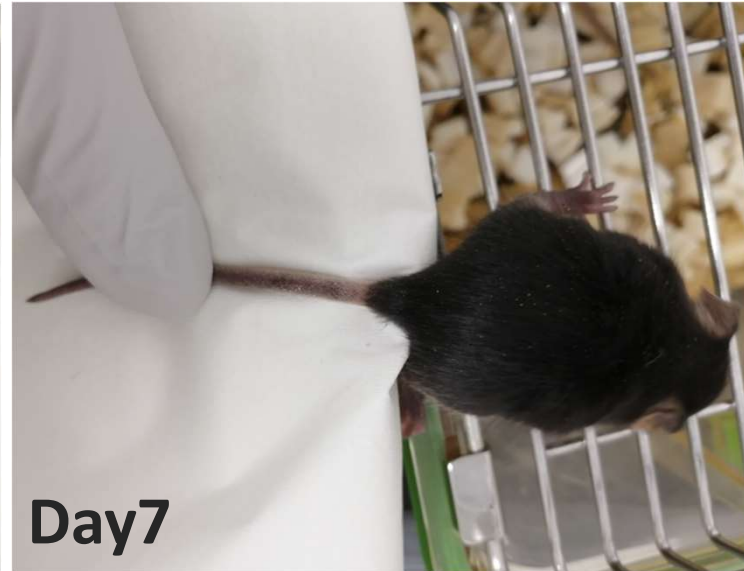
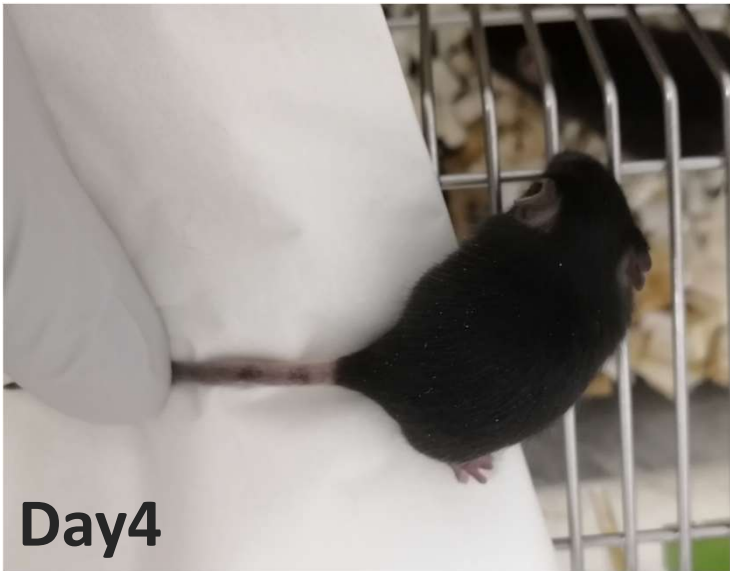
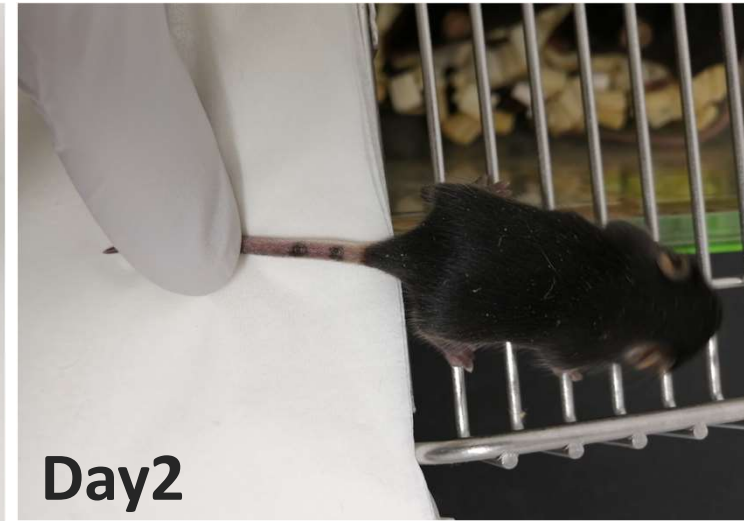
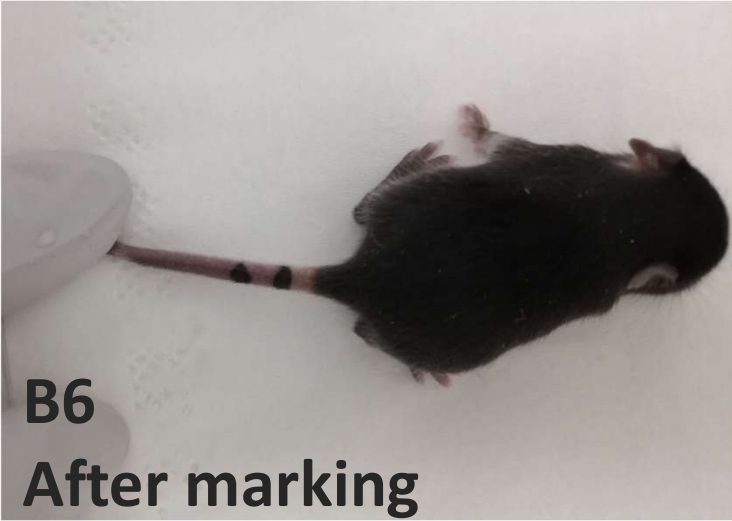
Laboratory animal's ID marker

# Oppen

User's Voice  
Case Study 3



Black Mouse(B6,Group Housing)  
「Black」 on 2 weeks old



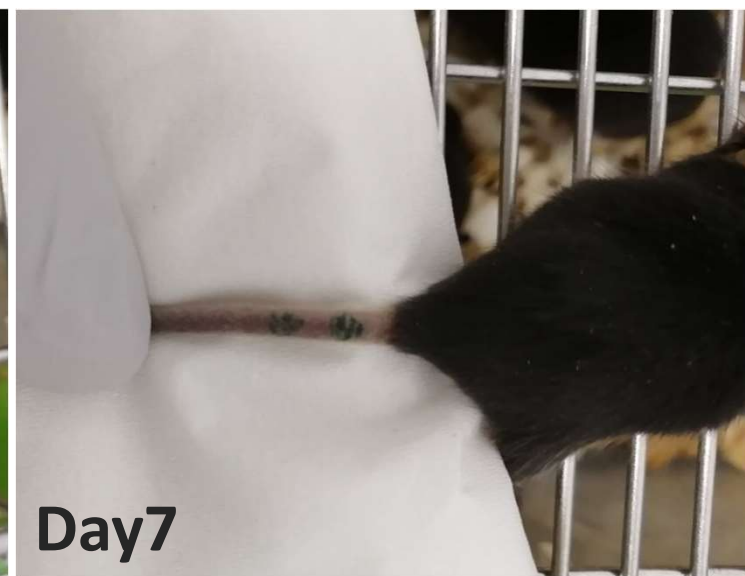
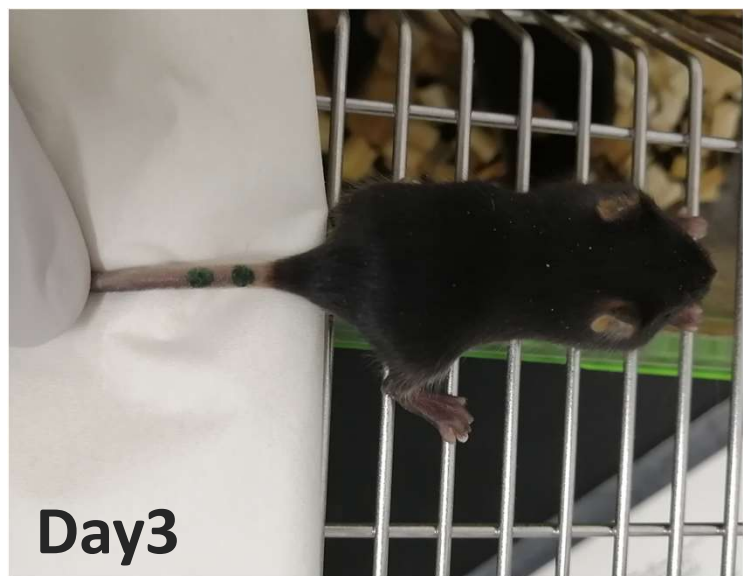
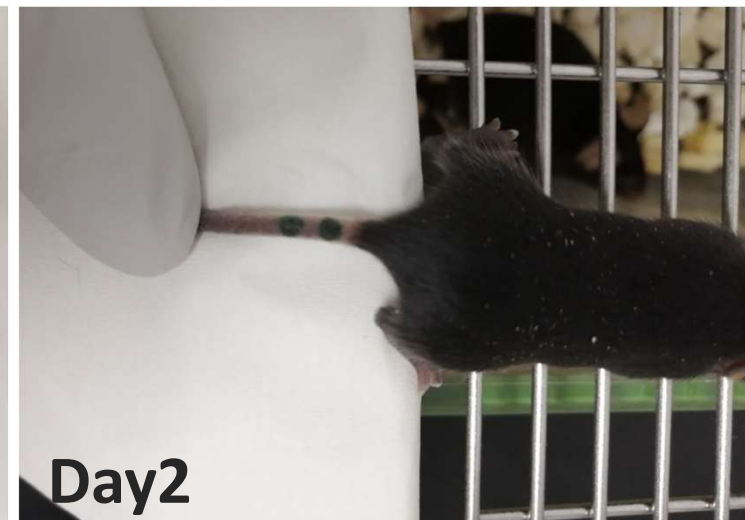
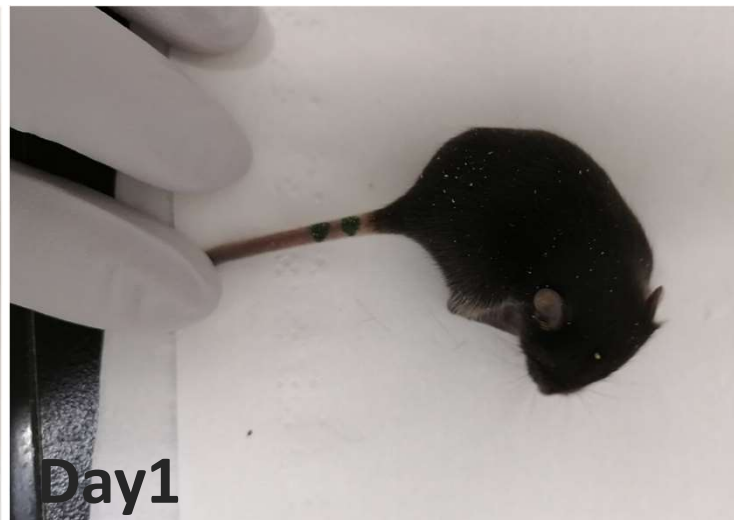
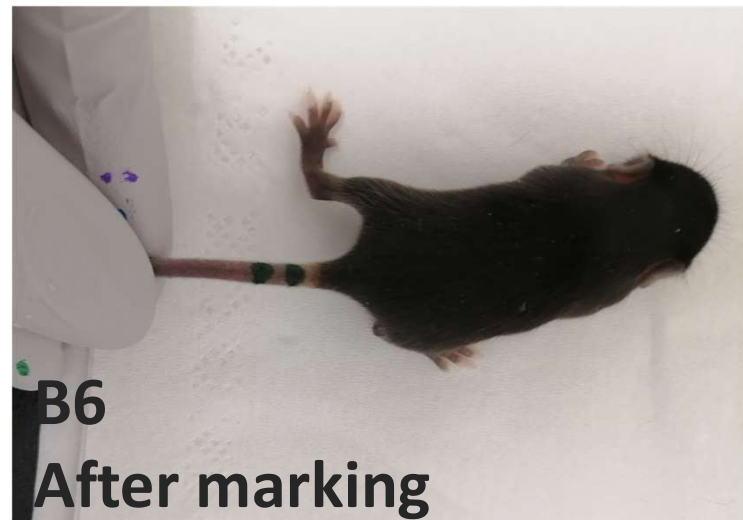
Laboratory animal's ID marker

# Oppen

User's Voice  
Case Study 3



Black Mouse(B6,Group Housing)  
「Green」 on 2 weeks old



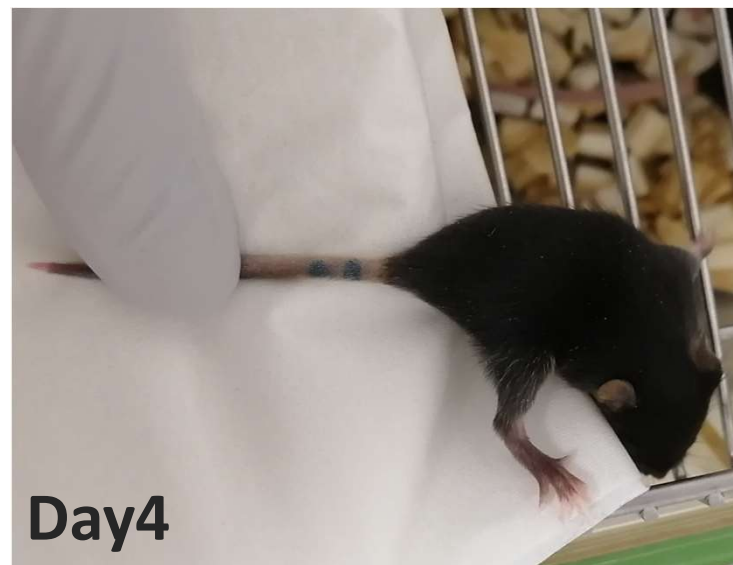
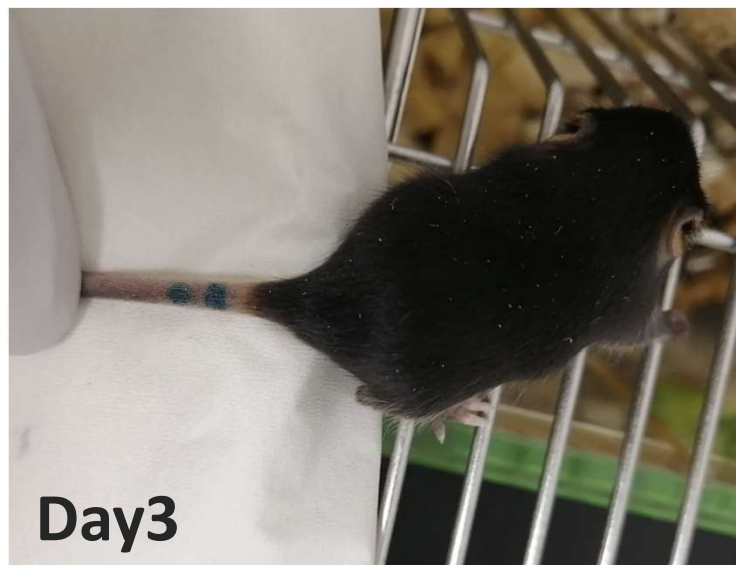
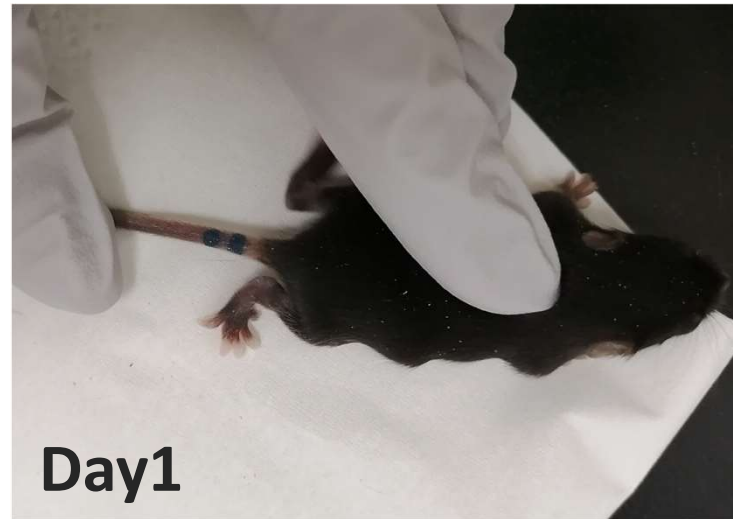
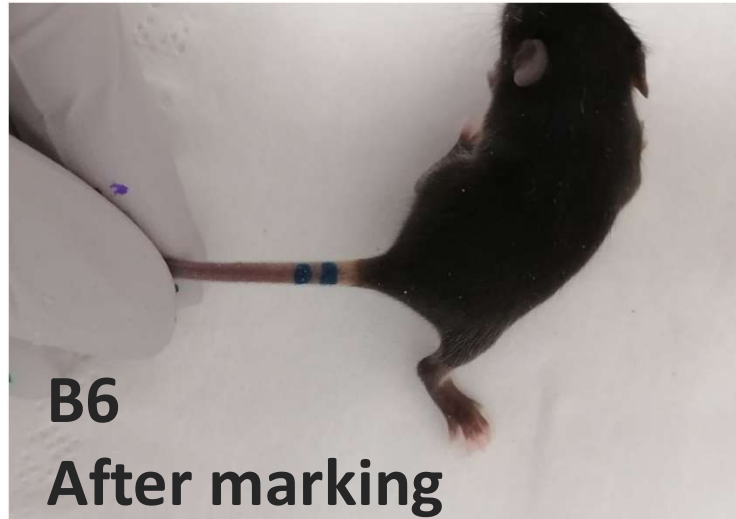
Laboratory animal's ID marker

# Oppen

User's Voice  
Case Study 3



Black Mouse(B6,Group Housing)  
「Light Blue」 on 2 weeks old



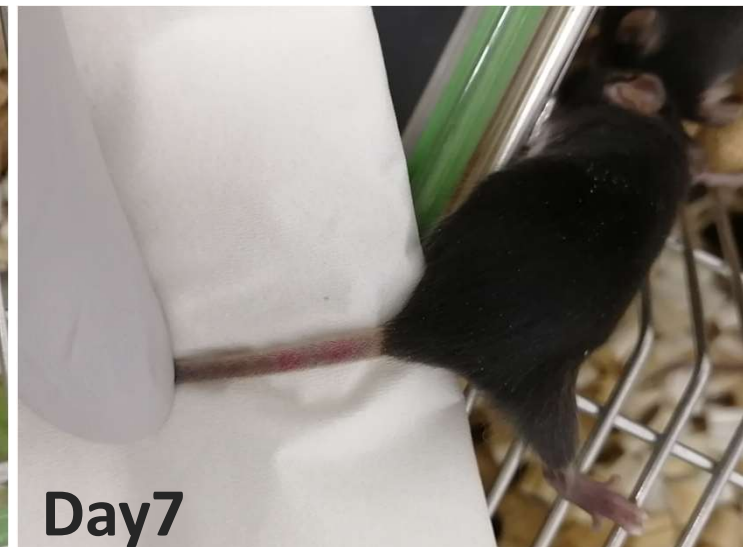
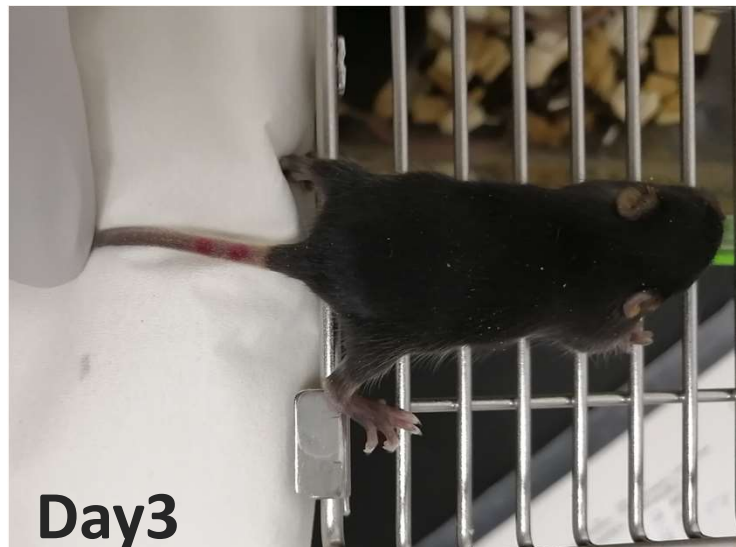
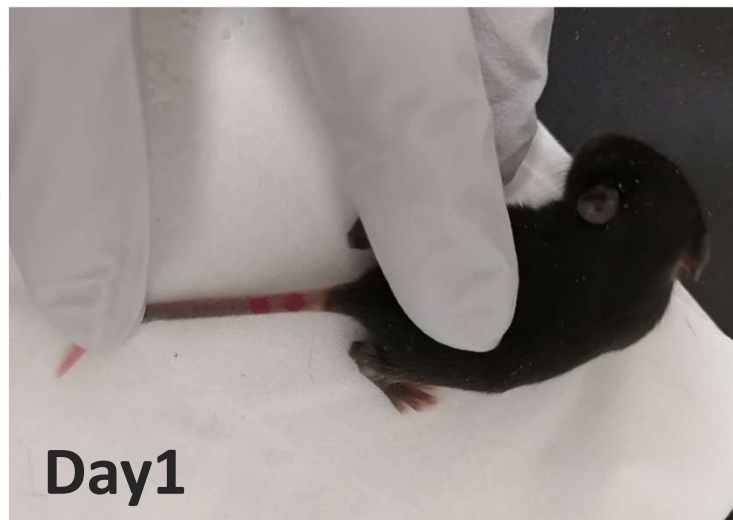
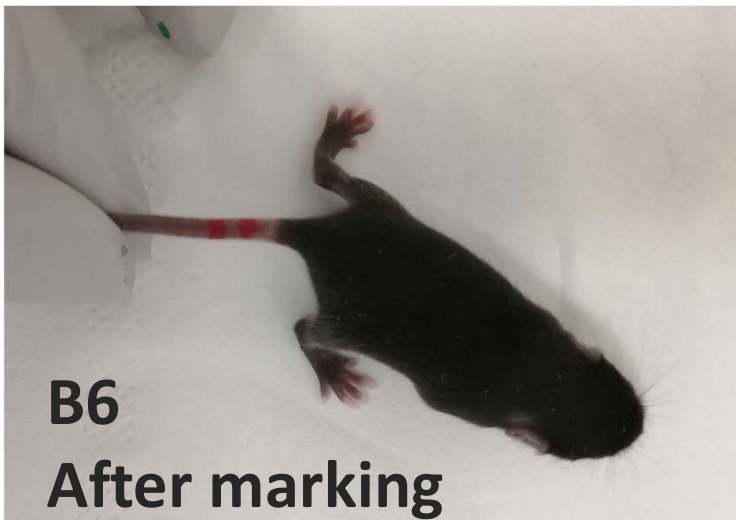
Laboratory animal's ID marker

# Oppen

User's Voice  
Case Study 3



Black Mouse(B6,Group Housing)  
「Pink」 on 2 weeks old



Laboratory animal's ID marker

# Oppen

User's Voice  
Case Study 3



Black Mouse(B6,Group Housing)  
「 Violet 」 on 2 weeks old



B6

After marking

Day1

Day2

Day3

Day4

Day7