

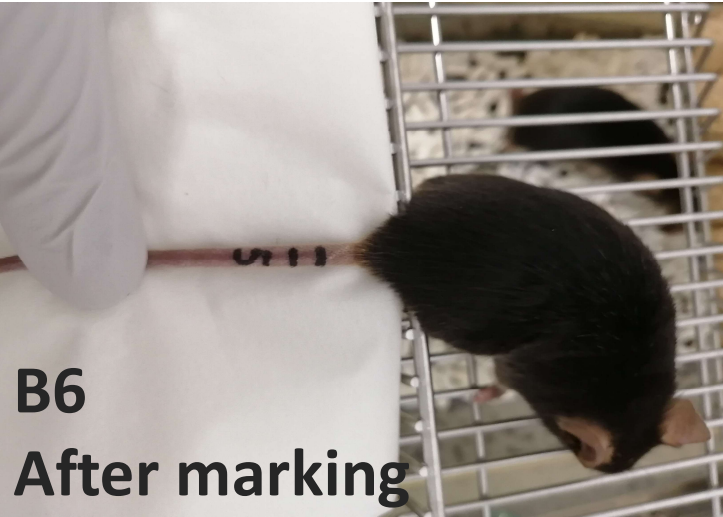
Laboratory animal's ID marker

Oppen

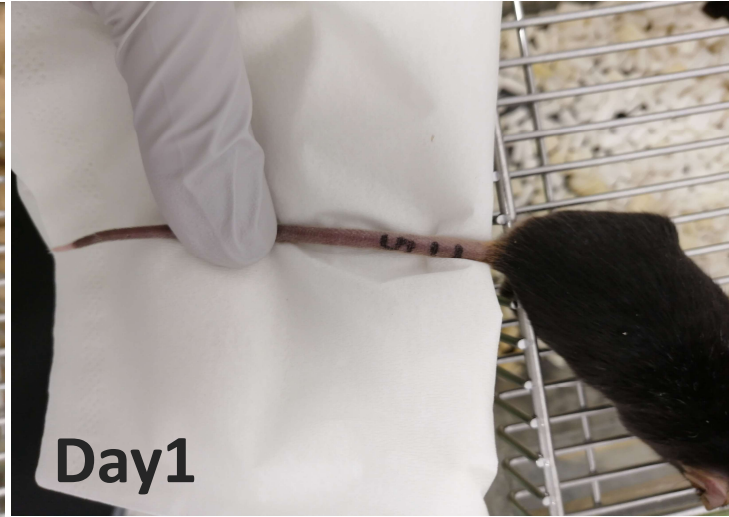
User's Voice
Case Study 4



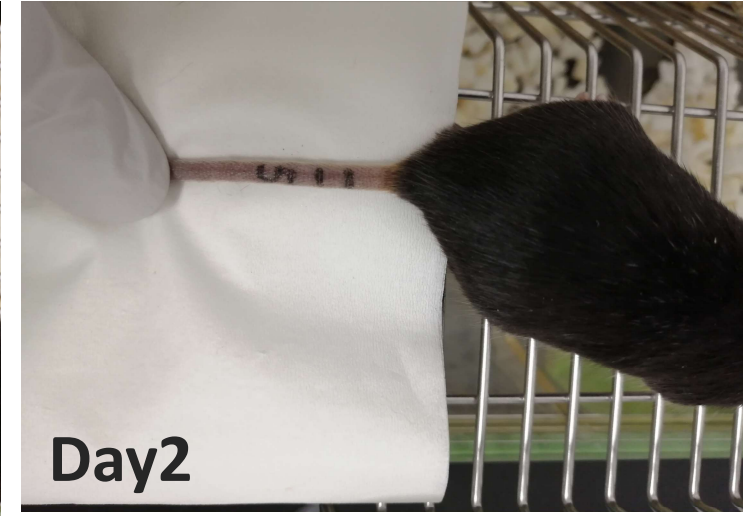
Black Mouse(B6,Group Housing)
「Black」 on 4 months old



B6
After marking



Day1



Day2



Day3



Day4



Day7

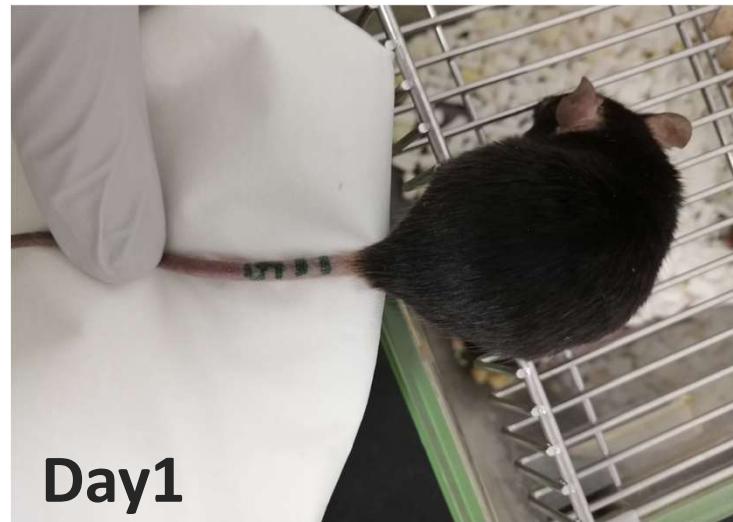
Laboratory animal's ID marker

Oppen

User's Voice
Case Study 4



Black Mouse(B6,Group Housing)
「Green」 on 4 months old



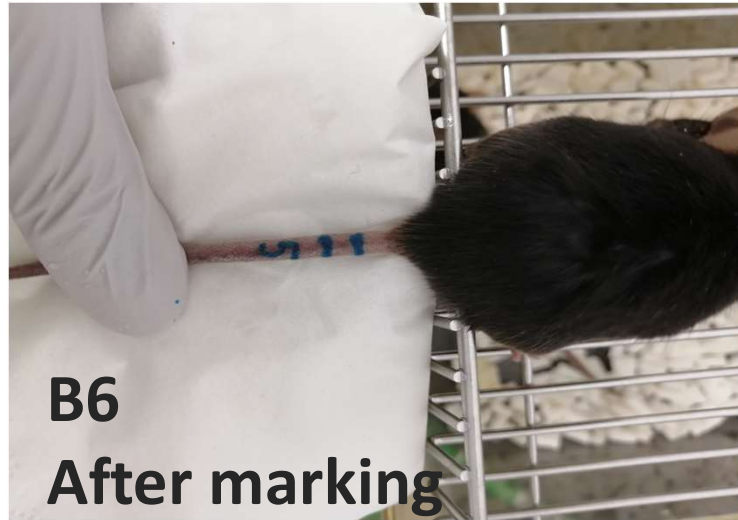
Laboratory animal's ID marker

Oppen

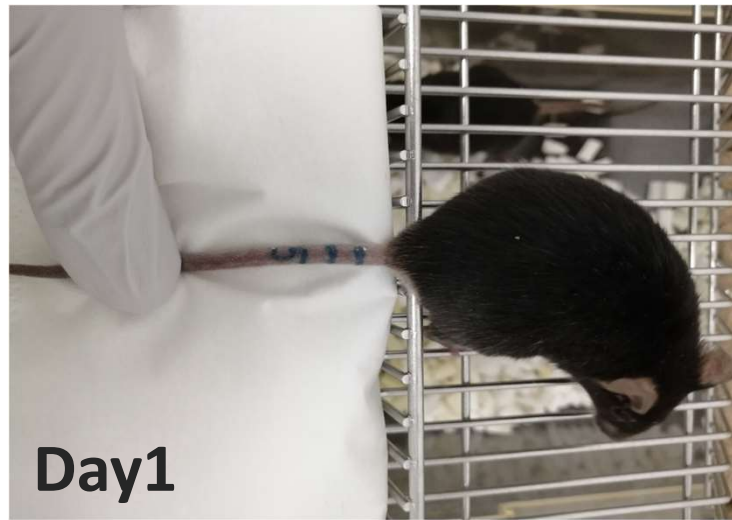
User's Voice
Case Study 4



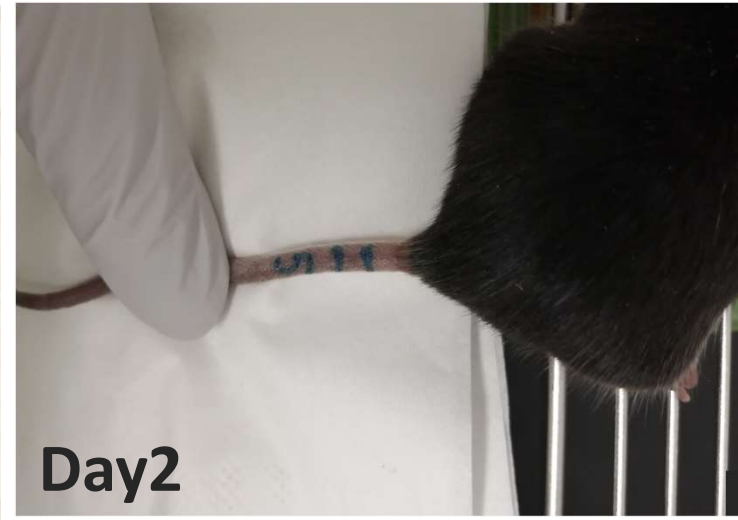
Black Mouse(B6,Group Housing)
「Light Blue」 on 4 months old



B6
After marking



Day1



Day2



Day3



Day4



Day7

Laboratory animal's ID marker

Oppen

User's Voice
Case Study 4



Black Mouse(B6,Group Housing)
「Pink」 on 4 months old



B6
After marking



Day1



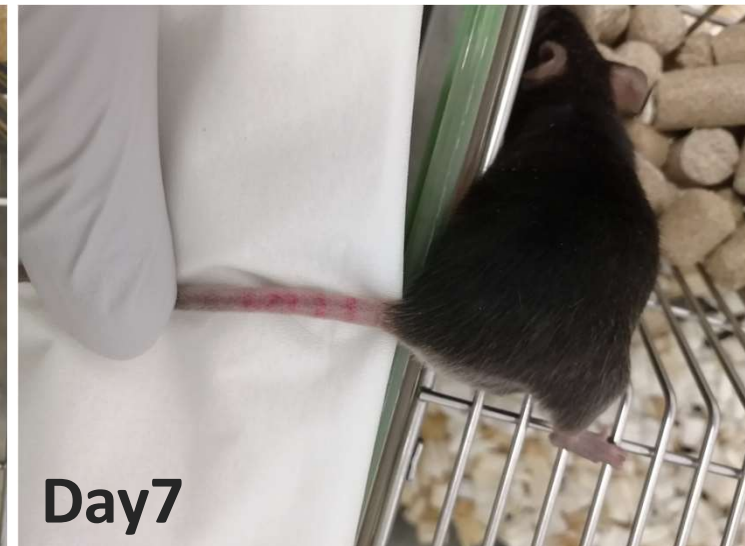
Day2



Day3



Day4



Day7

Laboratory animal's ID marker

Oppen

User's Voice
Case Study 4



Black Mouse(B6,Group Housing)
「Violet」 on 4 months old



B6

After marking

Day1

Day2

Day3

Day4

Day7