



# Introduction of NATSUME Seisakusho



## OUR HISTORY:

- Founded more than 75 years ago since 1946. We have been established in Hongo area where many universities line the streets. And have continued to make equipment related to animal experiments.
- We have been supported by people, while the environment surrounding us has changed significantly. We always values connections with people and society.

## OUR BELIEFE (OUR EMPLOYEES):

- We believe that the growth of everyone in the company is the growth of the company, and we aim to create an environment where employees can work with a sense of fulfillment and pride.

## OUR MISSION:

- Life sciences have developed through the efforts of people involved in research, but we must remember there are animals support them.
- To be close to researchers and express gratitude to animals, we will contribute to animal welfare and the improvement of the accuracy of experiments.

# Our Business

*Fine tools from Japan*

Please tell us not “what you want” but “what you want to do”.  
We will propose products that not only solve your problems with products,  
but also fulfill the things you want to do.

In addition to the development of 700 original products, we have expanded our business into a wide range of overseas brands and OEM products.

- We respond to your requests from "Do you have something like this?" to "Make something like this!"
- Together, we plan, design, develop to give shape to idea with a wide range of coordination capabilities.



Surgical/autopsy  
instruments



Simulator of animal  
experimental technique  
Natsume Rat



Marmoaset cage



IVC



Rotary Cage  
Washer



Negative Pressure  
Breeding Rack

In order to promote the development of a world-class experimental environment and support the ideal evolution of life sciences, we actively support the activities of industry associations.



- Animal experiments are supported not only by researchers, but also by various stakeholders such as communities that encourage information sharing, animal breeders and companies that provide food, equipment and prepare the environment.
- The organizations and study groups in various industries support this.
- Although Natsume Seisakusho is an equipment manufacturer, we actively help various industry groups and study groups by holding practical training sessions, wet hand instructors, explaining how to handle equipment, and helping with its operation. We believe that what we can do is not only to provide equipment, but also to help revitalize the industry itself.
- All in order to create an environment where appropriate animal testing can be conducted.



Our Business

Facility

Creation

Technology



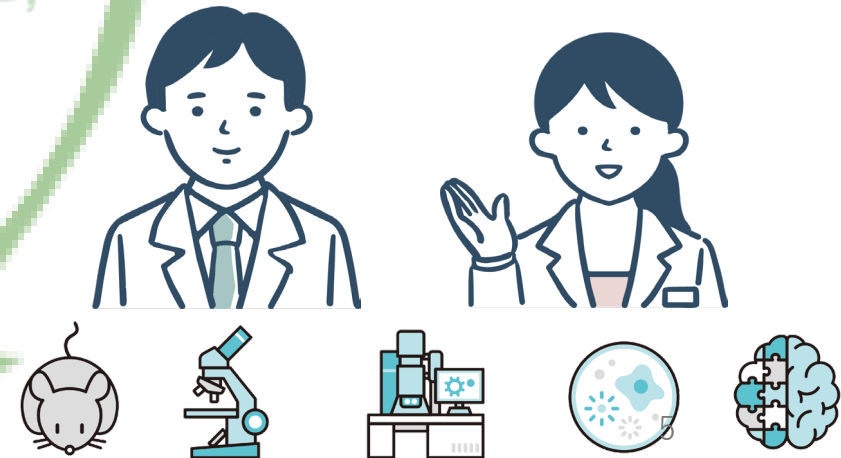
Leading to a Solution



New needs

Idea

Problem





## Action Guidelines

### **Customer Delight:**

Always think about what is really needed

### **Quality Commitment:**

Spare no effort in quality control and product improvement

### **Community Contribution:**

Comply with social rules, respect customs and cultures, and contribute to local communities.

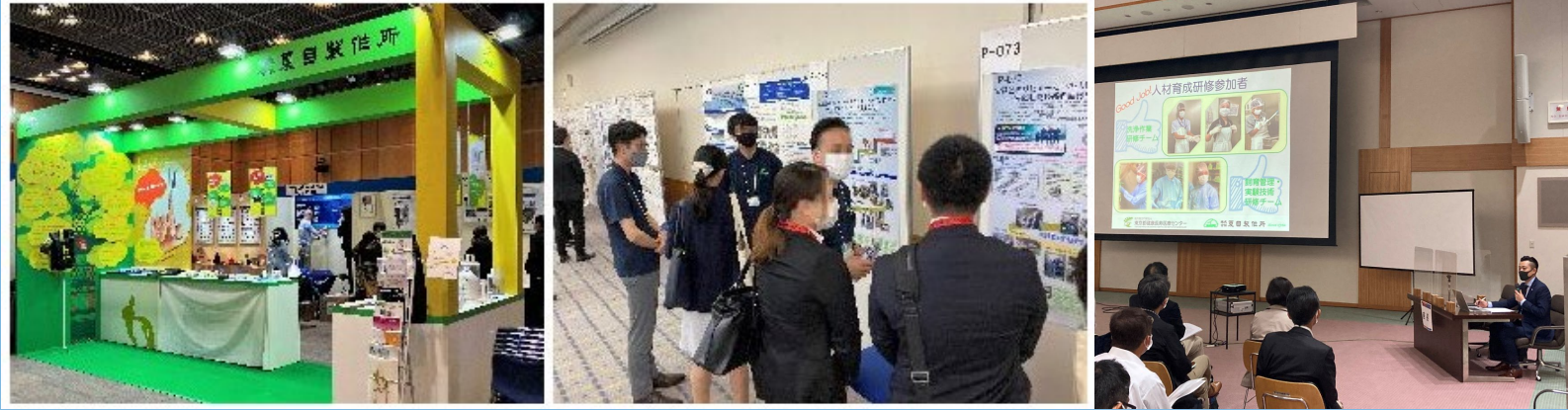
### **Animal Welfare:**

Approaching social movements with compassion for animals

### **Engagement & Empowerment:**

Supporting the pride and motivation of everyone, including those involved.

# CSR - Company Initiatives (in-reach)



Proactive Exhibition & Academic presentation

Record number: 499e4  
 Category: [Procedures - Management](#)  
 Type: [Miscellaneous](#)

Conventionally, it has been necessary to create pseudopregnant animals by cohabiting a male and a female with ligated spermatic ducts in order to produce a litter from transplanted fertilized eggs.

Contribute to 3Rs  
(our products listed in the 3Rs Database)

JALAS  
JSLAE

JAEAT  
SIA

and more...

Participation and contribution in industry associations



Enhanced Engagement



Creating opportunities for qualification and learning



# CSR - Company Initiatives (out-reach)



Cooperation in coverage of medical-industrial collaboration cases



Education on animal testing for children



Involvement with the local community



Provision of equipment to the media



Dissemination of initiatives



## Philosophy:

Work together for the future of life science  
to create "Human-animal-friendly manufacturing"

## Vision:

Pleasure to hear customers say, "Let's ask Natsume first."  
~Employees who work with pride and  
brilliance contribute to society~



*Chikako N*

Chikako Natsume  
President  
Natsume Seisakusho Co., Ltd.



**NATSUME SEISAKUSHO CO., LTD.**

18-6, YUSHIMA-2, BUNKYO-KU, TOKYO 113-8551 JAPAN

PHONE: +81-3-3813-3251

FAX: +81-3-3815-2002

HP: <https://www.nazme.co.jp>