



Introduction of NAZME

OUR HISTORY:

- Founded more than 80 years ago since 1946. We have been established in Hongo area where many universities line the streets. And have continued to make equipment related to animal experiments.
- We have been supported by people, while the environment surrounding us has changed significantly. We always values connections with people and society.

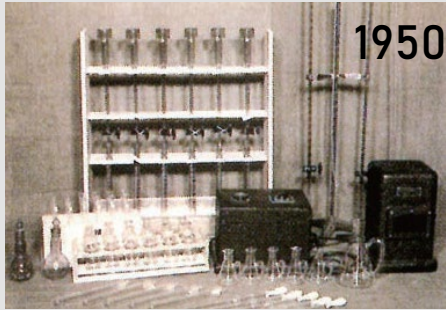
OUR BELIEFE (OUR EMPLOYEES):

- We believe that the growth of everyone in the company is the growth of the company, and we aim to create an environment where employees can work with a sense of fulfillment and pride.

OUR MISSION:

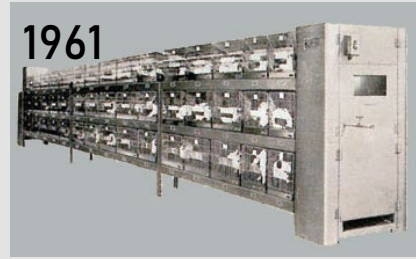
- Life sciences have developed through the efforts of people involved in research, but we must remember there are animals support them.
- To be close to researchers and express gratitude to animals, we will contribute to animal welfare and the improvement of the accuracy of experiments.

OUR HISTORY



1950

First in Japan
Vitamin B1 Quantifier led to the discovery of Allithiamine
Developed with Kyoto Univ.



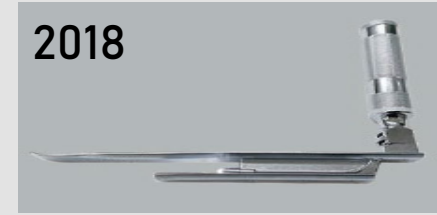
1961

First in Japan
Automatic belt-type breeding machine
Developed with National Institute of Health



2011

Patented
One-handed breast pump: Milk collection of mice and rats can be performed without laparotomy of the lactated offspring



2018

Porcine Mini-Porcine Laryngoscope I-Blade: Inspired by the opinions of Professor Otake of Keio University, we have improved the conventional product. It is easier to see, easier to hold, and gives shape to the researcher's thoughts.

1946
Established as sole proprietorship

1951
Company name changed

1952
Trademark registered

1962
Became Joint Stock company

1992
Osaka R&D Lab

1996
50th Anniversary

2009
Osaka Branch Office

2019
Chikako Natsume CEO

2021
75th Anniversary



1961

First in Japan
Polycarbonate Mice Cage: dramatically improved by material change from the conventional wooden box. A long-selling classic product.



1970

First in Japan
Rat tail artery pressure measuring device: A non-invasive device that can measure arterial pressure with a tail cuff.



1993

First in Japan
Small Animal Ventilator: can be used for small animals such as mice and rats with low respiratory volume. A successor with higher performance is currently on sale



2013

Simple inhalation anesthesia device for small animal: Since 2006, three improvements to improve its versatility and evolve into an easy-to-use anesthesia machine.



2019

First in Japan
Endotracheal spray: possible to spray viruses and chemical solutions into the trachea so as not to burden animals such as mice and rats as much as possible.

OUR MISSION

NAZME aims to realize a society in which all living creatures can coexist in abundance

Life Sciences Research Areas We Support



For the evolution of medical and pharmaceutical fields, equipment, and procedure support system.

- Drug development,
- Equipment development etc.



For safe and high-precision research and experiments

- Ecology and other academic research
- Basic experiments, etc.



For people's safe and healthy lives

- Safety and toxicity tests, etc. (Food additives, detergents, insecticides, pesticides, etc.)

Our Business

Facility

Creation

Technology



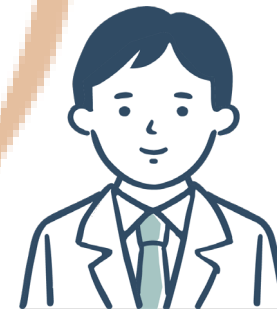
New needs

Idea

Problem



Leading to a Solution



What we offer

We covers everything you need for the animal laboratories.
Tell us not "what you want" but "what you want to do".

Together, we plan, design, develop to give shape to idea with a wide range of coordination capabilities.

What we offer is total consultation based on history, know-how, and experience.



Our Business

Please tell us not "what you want" but "what you want to do.
We will propose products that not only solve your problems with products, but also fulfill the things you want to do.

In addition to the development of 700 original products, we have expanded our business into a wide range of overseas brands and OEM products.

- We respond to your requests from "Do you have something like this?" to "Make something like this!"
- Together, we plan, design, develop to give shape to idea with a wide range of coordination capabilities.



Surgical/autopsy instruments



Simulator of animal experimental technique
Nazme Rat



Marmoaset cage



IVC



Rotary Cage Washer



Negative Pressure Breeding Rack

Working in Society

In order to promote the development of a world-class experimental environment and support the ideal evolution of life sciences, we actively support the activities of industry associations.



- Animal experiments are supported not only by researchers, but also by various stakeholders such as communities that encourage information sharing, animal breeders and companies that provide food, equipment and prepare the environment.
- The organizations and study groups in various industries support this.
- Although NAZME is an equipment manufacturer, we actively help various industry groups and study groups by holding practical training sessions, wet hand instructors, explaining how to handle equipment, and helping with its operation. We believe that what we can do is not only to provide equipment, but also to help revitalize the industry itself.
- All in order to create an environment where appropriate animal testing can be conducted.



Action Guidelines

Customer Delight:

Always think about what is really needed

Quality Commitment:

Spare no effort in quality control and product improvement

Community Contribution:

Comply with social rules, respect customs and cultures, and contribute to local communities.

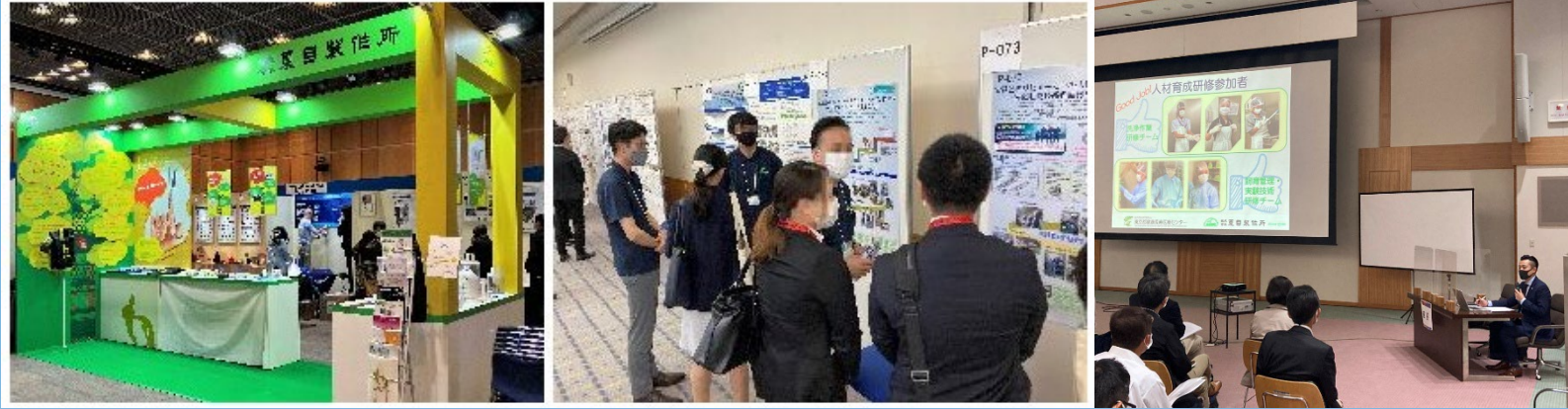
Animal Welfare:

Approaching social movements with compassion for animals

Engagement & Empowerment:

Supporting the pride and motivation of everyone, including those involved.

CSR - Company Initiatives (in-reach)



Proactive Exhibition & Academic presentation

norecopa

Record number: 499e4
 Category: [Procedures - Management](#)
 Type: [Miscellaneous](#)

Conventionally, it has been necessary to create pseudopregnant animals by cohabiting a male and a female with ligated spermatic ducts in order to produce a litter from transplanted fertilised eggs.

Contribute to 3Rs
 (our products listed in the 3Rs Database)

JALAS
JSLAE

JAEAT
SIA

and more...

Participation and contribution
in industry associations



Enhanced Engagement



Creating opportunities for
qualification and learning

CSR - Company Initiatives (out-reach)



Cooperation in coverage of medical-industrial collaboration cases



Education on animal testing for children



Involvement with the local community



Provision of equipment to the media



Dissemination of initiatives

More about Our Products



Pharmacology and Physiology Research Equipment



Anesthesia, surgery, and dissection equipment



Animal Testing Equipment



IVC



Experimental Animal Breeding Equipment



Breeding-related equipment



Surgical Instrument



Enrichment Simulator

Please note that some electrical products have not obtained US safety standards, so please use this information for reference only.

More about Our Products



Pharmacology and Physiology
Research Equipment



Please note that some electrical products have not obtained US safety standards, so please use this information for reference only.

More about Our Products



Experimental Animal Breeding Equipment

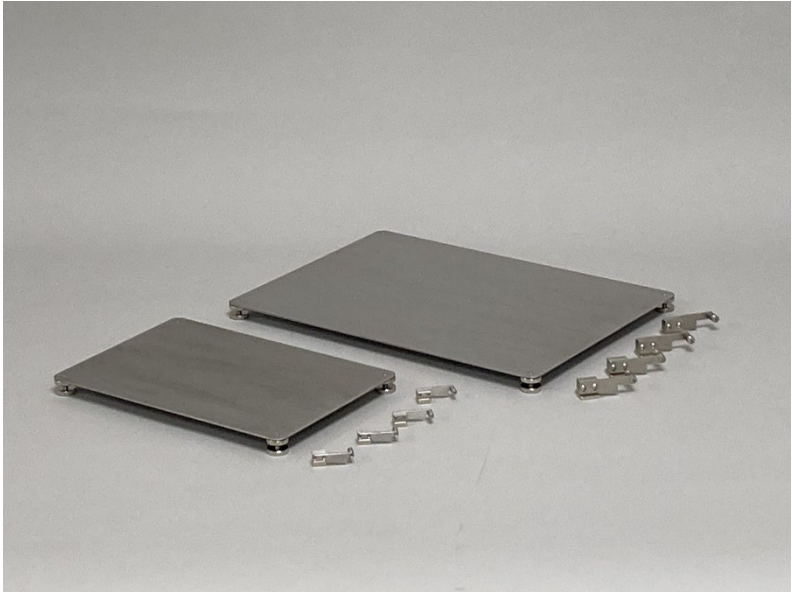


Please note that some electrical products have not obtained US safety standards, so please use this information for reference only.

More about Our Products



Anesthesia, surgery, and dissection equipment

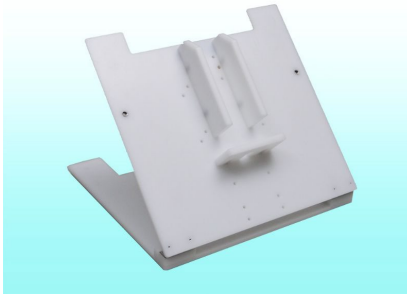


Please note that some electrical products have not obtained US safety standards, so please use this information for reference only.

More about Our Products



Animal Testing Equipment



Please note that some electrical products have not obtained US safety standards, so please use this information for reference only.

More about Our Products



Breeding-related
equipment



Please note that some electrical products have not obtained US safety standards, so please use this information for reference only.

More about Our Products



Surgical Instrument



Enrichment Simulator

