


NATSUME SEISAKUSHO Co., Ltd.

Company Profile



NATSUME SEISAKUSHO CO., LTD.
18-6, YUSHIMA-2, BUNKYO-KU, TOKYO 113-8551 JAPAN
PHONE: +81-3-3813-3251 FAX: +81-3-3815-2002
HP: <https://www.nazme.co.jp>



A light gray background featuring a variety of stylized human figures in different poses and outfits, representing a diverse crowd. Interspersed among the people are several line-art icons: a DNA double helix, a document with a checklist, a laboratory flask on a stand, a microscope, and a rabbit. In the center, a light blue rectangular box contains the text "Small steps for a big future".

Small steps
for a big future

Fine tools from Japan

OUR HISTORY:

- Founded more than 75 years ago since 1946. We have been established in Hongo area where many universities line the streets. And have continued to make equipment related to animal experiments.
- We have been supported by people, while the environment surrounding us has changed significantly. We always value connections with people and society.

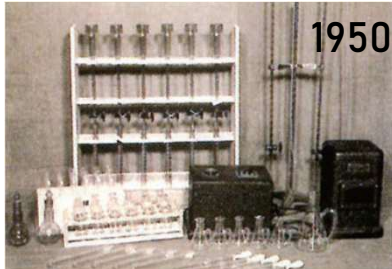
OUR BELIEF (OUR EMPLOYEES):

- We believe that the growth of everyone in the company is the growth of the company, and we aim to create an environment where employees can work with a sense of fulfillment and pride.

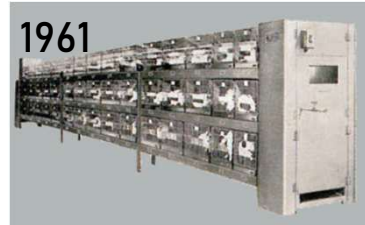
OUR MISSION:

- Life sciences have developed through the efforts of people involved in research, but we must remember there are animals support them.
- To be close to researchers and express gratitude to animals, we will contribute to animal welfare and the improvement of the accuracy of experiments.

OUR HISTORY



1950
First in Japan
Vitamin B1 Quantifier led to the discovery of Allithiamine
Developed with Kyoto Univ.



1961
First in Japan
Automatic belt-type breeding machine
Developed with National Institute of Health



2011
Patented
One-handed breast pump: Milk collection of mice and rats can be performed without laparotomy of the lactated offspring



2018
Porcine Mini-Porcine Laryngoscope I-Blade: Inspired by the opinions of Professor Otake of Keio University, we have improved the conventional product. It is easier to see, easier to hold, and gives shape to the researcher's thoughts.

Fine tools from Japan

1946
Established
as sole proprietorship

1951
Company name
changed

1952
Trademark
registered

1962
Became Joint
Stock company

1992
Osaka R&D
Lab

1996
50th
Anniversary

2009
Osaka
Branch Office

2019
Chikako Natsume
CEO

2021
75th
Anniversary



1961
First in Japan
Polycarbonate Mice Cage: dramatically improved by material change from the conventional wooden box. A long-selling classic product.



1970
First in Japan
Rat tail artery pressure measuring device: A non-invasive device that can measure arterial pressure with a tail cuff.



1993
First in Japan
Small Animal Ventilator: can be used for small animals such as mice and rats with low respiratory volume. A successor with higher performance is currently on sale



2013
Simple inhalation anesthesia device for small animal: Since 2006, three improvements to improve its versatility and evolve into an easy-to-use anesthesia machine.

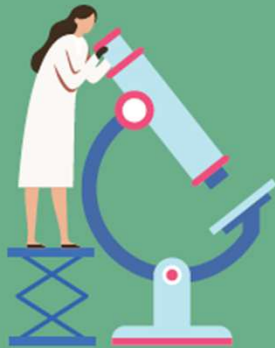


2019
First in Japan
Endotracheal spray: possible to spray viruses and chemical solutions into the trachea so as not to burden animals such as mice and rats as much as possible.

OUR MISSION

Natsume Seisakusho aims to realize a society in which all living creatures can coexist in abundance

Life Sciences Research Areas We Support



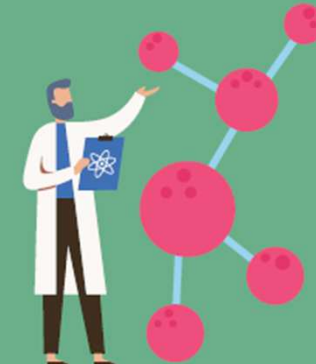
For the evolution of medical and pharmaceutical fields, equipment, and procedure support system.

- Drug development,
- Equipment development, etc.



For safe and high-precision research and experiments

- Ecology and other academic research
- Basic experiments, etc.



For people's safe and healthy lives

- Safety and toxicity tests, etc. (Food additives, detergents, insecticides, pesticides, etc.)

OUR BUSINESS

Continue to be a coordinator who is familiar with the industry and technology to help researchers solve problems in the best possible way.

There are two main purposes for animal experiments.

1. to maintain people's health through the prevention and treatment of diseases.
 2. to clarify the fundamental question of who humans are.
- In any case, many things can only be understood through experiments using animals. Under such circumstances, we believe that the accuracy of experiments will be improved by preventing animals from feeling unnecessary stress, and we believe that what we should do is to practice animal welfare.
 - Properly understanding the contents of experiments, animal species, related laws and guidelines, and providing appropriate equipment and services is the form of animal welfare that we, as equipment manufacturers, can do.



Working in Society

In order to promote the development of a world-class experimental environment and support the ideal evolution of life sciences, we actively support the activities of industry associations.



- Animal experiments are supported not only by researchers, but also by various stakeholders such as communities that encourage information sharing, animal breeders and companies that provide food, equipment and prepare the environment.
- The organizations and study groups in various industries support this.
- Although Natsume Seisakusho is an equipment manufacturer, we actively help various industry groups and study groups by holding practical training sessions, wet hand instructors, explaining how to handle equipment, and helping with its operation. We believe that what we can do is not only to provide equipment, but also to help revitalize the industry itself.
- All in order to create an environment where appropriate animal testing can be conducted.

Our Business

Fine tools from Japan

Please tell us not "what you want" but "what you want to do."
We will propose products that not only solve your problems with products, but also fulfill the things you want to do.

In addition to the development of 700 original products, we have expanded our business into a wide range of overseas brands and OEM products.

- We respond to your requests from "Do you have something like this?" to "Make something like this!"
- Together, we plan, design, develop to give shape to idea with a wide range of coordination capabilities.



Surgical/autopsy
instruments



Simulator of animal
experimental technique
Natsume Rat



Marmoset cage



IVC



Rotary Cage
Washer



Negative Pressure
Breeding Rack

Our Business

In order to conduct safer and higher-quality experiments and research, we respond to a variety of requests such as improving procedures and compliance with laws and regulations, as well as budgets.

- From the design, implementation, and equipment selection of research facilities to proposals for operation methods, we will help you manage the facility and succeed in experiments and research.
- In order to enable experiments and research that are friendly to both humans and animals, we not only provide facilities and equipment, but also support the resolution of various requests and issues with comprehensive solutions and services.

Stability

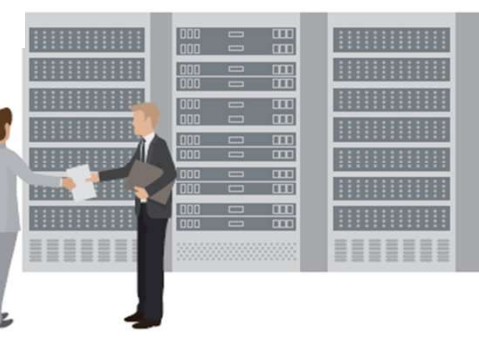


Safety



Simplicity

Reliability





Action Guidelines

- Customer satisfaction: Always think about what is really needed
- Achieving High Quality: Spare no effort in quality control and product improvement
- Social Welfare and Compliance with Laws and Regulations: Comply with social rules, respect customs and cultures, and contribute to local communities.
- Animal Welfare: Approaching social movements with compassion for animals
- Employee Wellbeing: Supporting the pride and motivation of everyone, including those involved.

Philosophy: Work together for the future of life science to create “Human-animal-friendly manufacturing”

Vision: Pleasure to hear customers say, "Let's ask Natsume Seisakusho first."

Employees who work with pride and brilliance contribute to society

A handwritten signature in black ink that reads "Chikako N".

Chikako Natsume
President
Natsume Seisakusho Co., Ltd.